

Conserver® XL-E-FL

Project _____
Item _____
Quantity _____
CSI Section 11400
Approval _____
Date _____

Conserver® XL-E-FL

Models

Conserver® XL-E-FL



Standard Features

- Front loading door-type is great for applications with limited space
- Electronic timer
- Internal sump design
- Built-in waste accumulator
- Delimer switch for easy removal of hard water deposits
- Removable scrap screen
- Air gap instead of vacuum breaker
- Door switch
- Convenient top mounted controls
- Auto start
- Interchangeable upper and lower stainless steel wash/ rinse arms
- Wash thermometer
- Low chemical indicator lights
- Flanged feet on the rear and adjustable bullet feet on the front

Mandatory Specs

Specify voltage _____

Options

- ☐ Water Hammer Arrestor
- ☐ Scaltrol
- ☐ Flanged Feet
- ☐ Audible Low Product Alarm
(available only on 115v models)

Accessories

- ☐ 36-Compartment Rack
 - ☐ 4-1/8" tall (105 mm)
 - ☐ 5-5/8" tall (143 mm)
 - ☐ 7" tall (178 mm)
- ☐ Combination Rack
- ☐ Peg Rack

Specifications

Uses 1.02 gallons (3.9 liters) water per rack

39 racks per hour (Normal cycle)

Single point electrical connection

Self-draining stainless steel pump eliminates soil/detergent carryover between wash and rinse cycles

Fill and Dump design disposes of dirty water, replacing it with a fresh water rinse every cycle

17-15/16" (456 mm) vertical inside clearance

Built-in chemical pumps and priming switches

Large removable scrap screen

Durable stainless steel construction



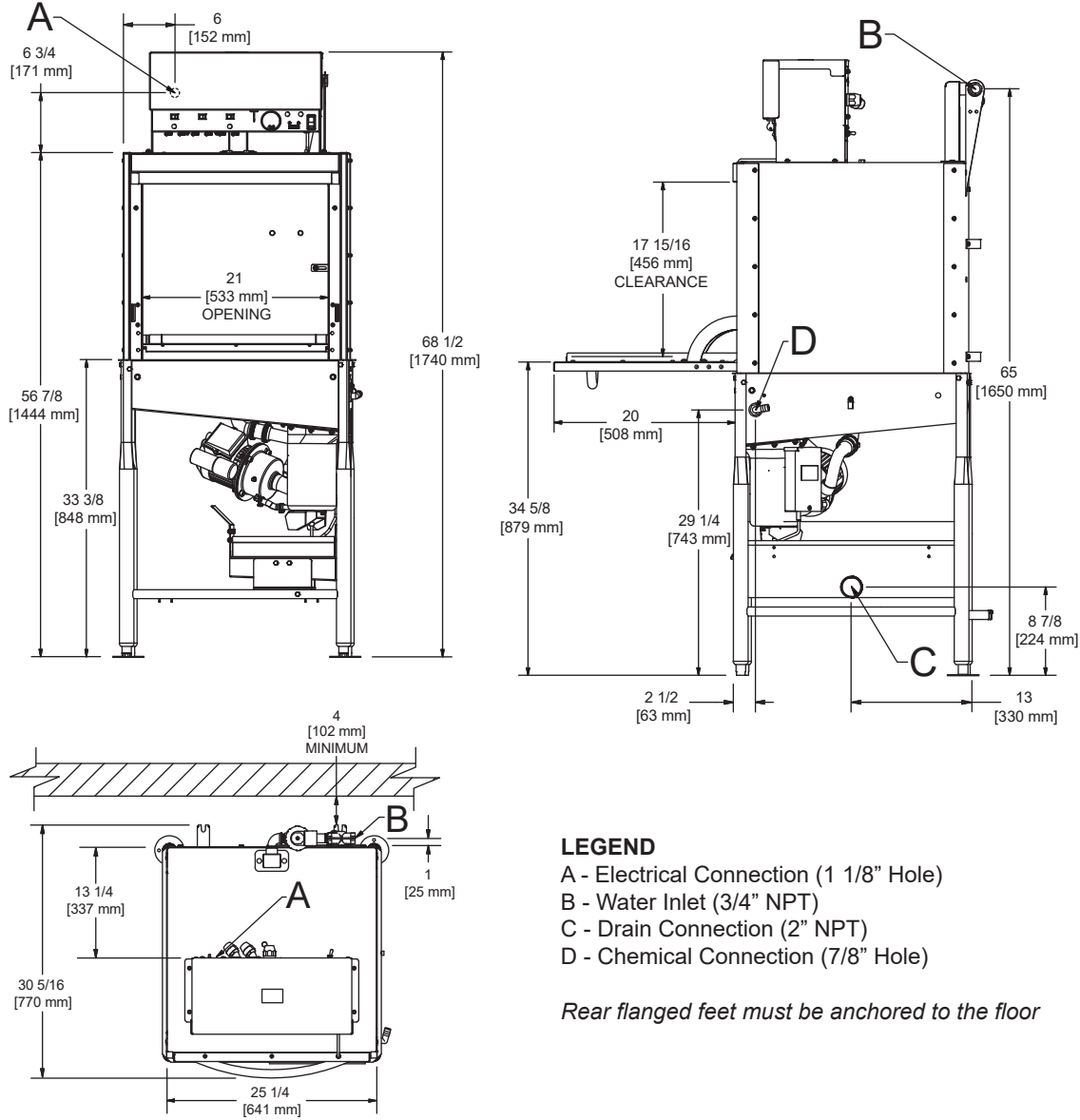
Intertek



Intertek



Conservor® XL-E-FL



LEGEND

- A - Electrical Connection (1 1/8" Hole)
- B - Water Inlet (3/4" NPT)
- C - Drain Connection (2" NPT)
- D - Chemical Connection (7/8" Hole)

Rear flanged feet must be anchored to the floor

MODEL NO.	MACHINE DIMENSIONS				DRAIN HEIGHT	SHIPPING INFORMATION					
	HEIGHT	WIDTH	DEPTH	DEPTH WITH DOOR OPEN		WEIGHT	CLASS	CUBE	HEIGHT	WIDTH	DEPTH
Conservor® XL-E-FL	68-1/2" (1740 mm)	25-1/4" (641 mm)	30-5/16" (770 mm)	50-5/16" (1278 mm)	8-7/8" (224 mm)	240 lbs (109 kg)	300	58.15 cu. ft.	72.5" (1842 mm)	33" (838 mm)	42" (1067 mm)

APPROXIMATE AMP LOADS	
115V/60HZ/1PH	11.4 AMPS
230V/60HZ/1PH	6.6 AMPS

WATER REQUIREMENTS		
	MINIMUM	RECOMMENDED
Inlet Temperature	120°F (49 °C)	140°F (60 °C)
Wash Operating Temperature	120°F (49 °C)	140°F (60 °C)
Rinse Operating Temperature	120°F (49 °C)	140°F (60 °C)

PERFORMANCE CAPABILITIES	
Flow Pressure (PSI)	20 ±5
Wash Pump Motor Horsepower	1
Pump Capacity (GPM)	55
Minimum Chlorine Required (PPM)	50

HOW TO SPECIFY: Conservor® XL-E-FL

Jackson WWS, Inc.

Shipping Address: 6209 North U.S. Highway 25E, Gray, KY 40734
Mailing Address: P.O.Box 1060, Barbourville, KY 40906
Telephone: 888-800-5672 • Fax: 606-523-1799
Email: info@jacksonwws.com
07610-004-78-56 [10/02/2020]

www.jacksonwws.com

We reserve the right to change specifications in this bulletin without incurring any obligation for equipment previously or subsequently sold.