



ITEM: _____ PROJECT NAME: _____ DATE: _____

HIGH VOLUME NON-REFRIGERATED BAKERY CASE

**MODEL SGD3148
SGD3642 SGD3648
SGD5042 SGD5048
SGD5942 SGD5948
SGD7742 SGD7748**



*Display more product and serve more customers with presentation and value in mind.
Cases are available in lengths of 31", 36", 50", 59", and 77". Designed for continuous case line-ups
without middle end glass.*

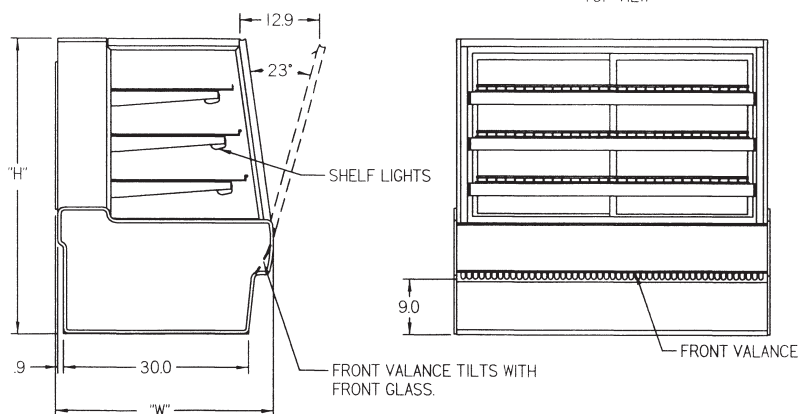
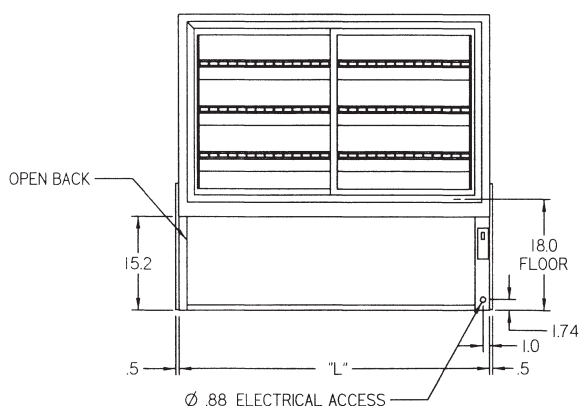
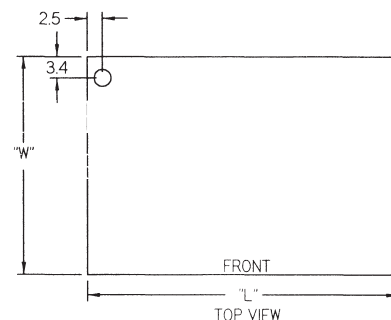
STANDARD FEATURES

- Adjustable white wire shelves. Shelves are adjustable up and down and can also be tilted in three positions. 48" models have three tiers of shelves; 42" models have two tiers of shelves.
- Tempered tilt-out front glass for easy cleaning. Front glass is sloped for high visual product display.
- Tempered glass top, ends, and doors.
- Removable sliding rear doors, shelf lights, shelf supports, and shelves.
- 31" and 36" have two swing doors.
- LED top light and shelf lights.
- Steel base construction with a choice of six standard laminates on base. Other finishes optional.
- Scratch-resistant, corrosion-proof white vented display deck.
- Designed for continuous line-ups.
- Black trim.
- UL Safety and UL Sanitation Listed.

HIGH VOLUME NON-REFRIGERATED BAKERY CASE

OPTIONAL ACCESSORIES:

- | | |
|--|--|
| <input type="checkbox"/> Special Base Finish | <input type="checkbox"/> Reflective Rear Doors |
| <input type="checkbox"/> Glass Shelves | <input type="checkbox"/> Casters/Cord & Plug Included |
| <input type="checkbox"/> Rear Wrapping Board | <input type="checkbox"/> Legs |
| <input type="checkbox"/> Cord & Plug (NEMA 5-15P) | <input type="checkbox"/> Top Cutting Board, White |
| <input type="checkbox"/> Fan Kit | <input type="checkbox"/> Package Shelf |
| <input type="checkbox"/> Black, Gold, or Chrome Wire Shelves | <input type="checkbox"/> Light Below Package Shelf |
| <input type="checkbox"/> Reflective Ends | <input type="checkbox"/> Front Glass & Rear Door Locks |
| <input type="checkbox"/> White or Mirrored Interior Ends with Laminated Exterior | <input type="checkbox"/> Joining Kit for Continuous Line-ups |



SPECIFICATIONS:

Model	Dimensions			Shipping Weight (lbs.)	Bakery Pan Capacity	Electrical (120/60/1)
	L	W	H			
SGD3148	31.13"	35.31"	48"	270	4 (18" x 26") & 4 (9" x 26")	1.5 AMPS
SGD3642	36.13"	35.31"	42"	385	3 (18" x 26") & 3 (9" x 26")	1.5 AMPS
SGD3648	36.13"	35.31"	48"	400	4 (18" x 26") & 4 (9" x 26")	1.5 AMPS
SGD5042	50.13"	35.31"	42"	425	6 (18" x 26") & 3 (9" x 26")	1.5 AMPS
SGD5048	50.13"	35.31"	48"	480	8 (18" x 26") & 4 (9" x 26")	1.5 AMPS
SGD5942	59.13"	35.31"	42"	505	9 (18" x 26")	1.5 AMPS
SGD5948	59.13"	35.31"	48"	535	12 (18" x 26")	1.5 AMPS
SGD7742	77.13"	35.31"	42"	685	12 (18" x 26")	1.5 AMPS
SGD7748	77.13"	35.31"	48"	715	16 (18" x 26")	1.5 AMPS

- If a GFCI circuit is required, a GFCI Breaker Must be used instead of GFCI receptacle.
- Due to continuing engineering improvements, specifications are subject to change without notice.



Look to Federal for Innovative Merchandising



The Signature of Quality

FEDERAL INDUSTRIES

A Standex Company

215 FEDERAL AVENUE, BELLEVILLE, WISCONSIN 53508-9201

PHONE: 800-356-4206

EMAIL: geninfo@federalind.com

FAX: 608-424-3234

WEBSITE: www.federalind.com

